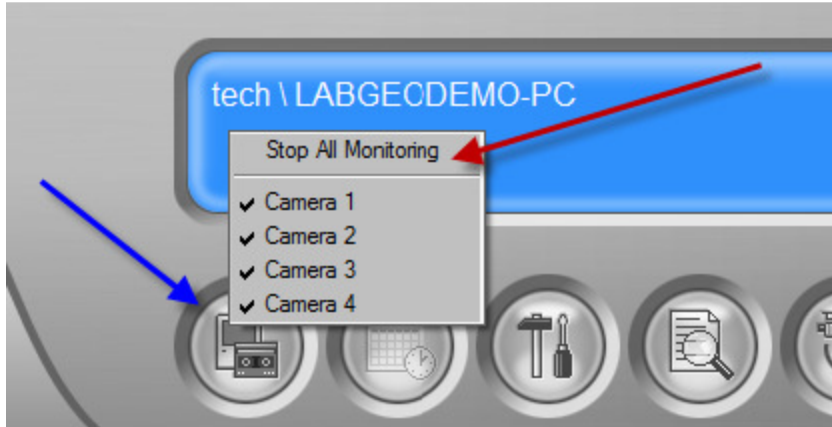


GeoVision Repair Data Base Tool

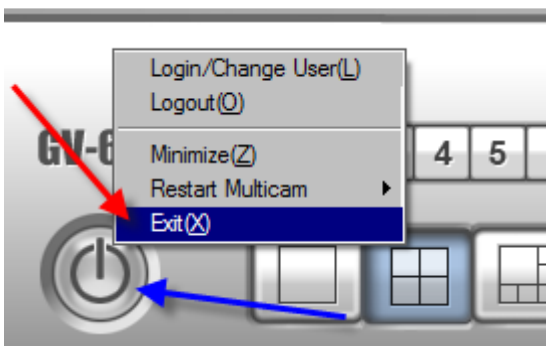
If you are having issues with the playback on your system you may need to run the DB repair tool to clean up the DB.

To run the tool, follow the steps shown below.

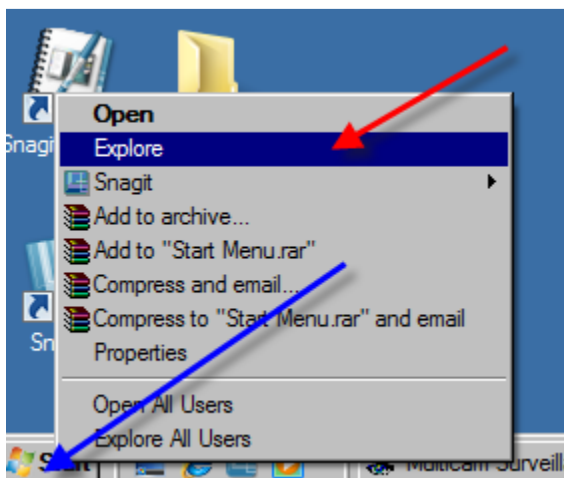
1. Stop all monitoring on the GeoVision system. First click on the monitor button (blue arrow) and then click on **Stop All Monitoring** (red arrow) as shown below.



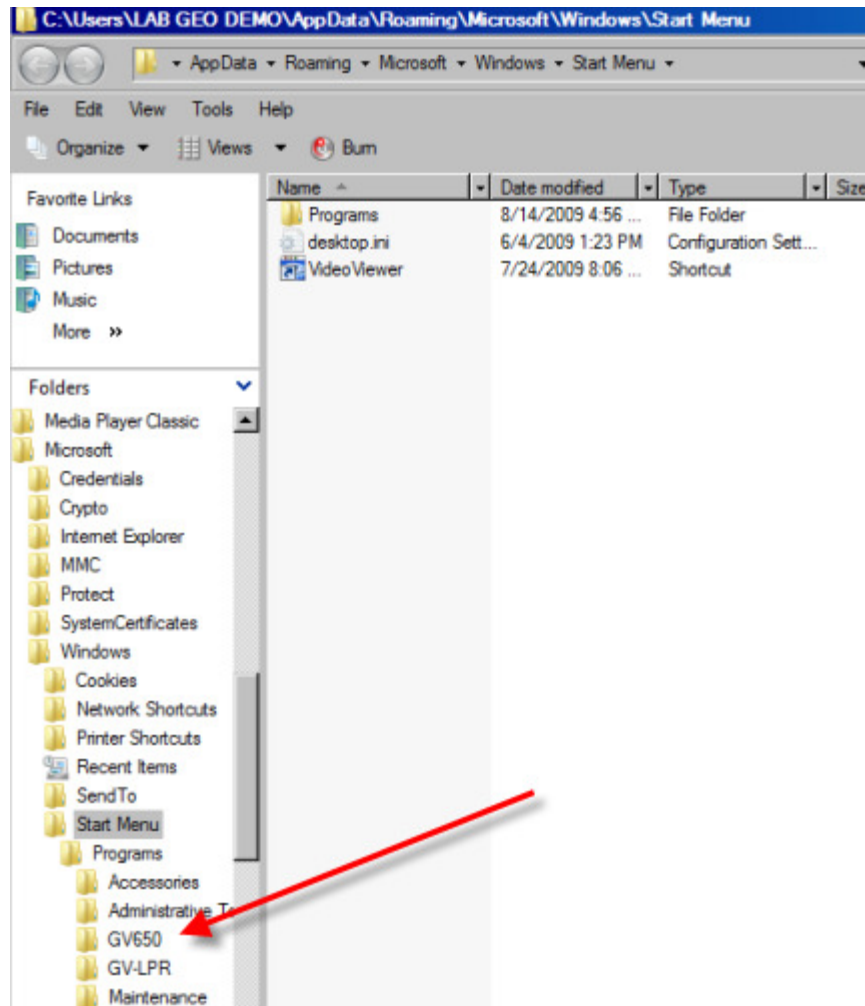
2. Now exit the GeoVision program by clicking on the **Login/Exit** button (blue arrow below) and then click on **Exit** (red arrow below).



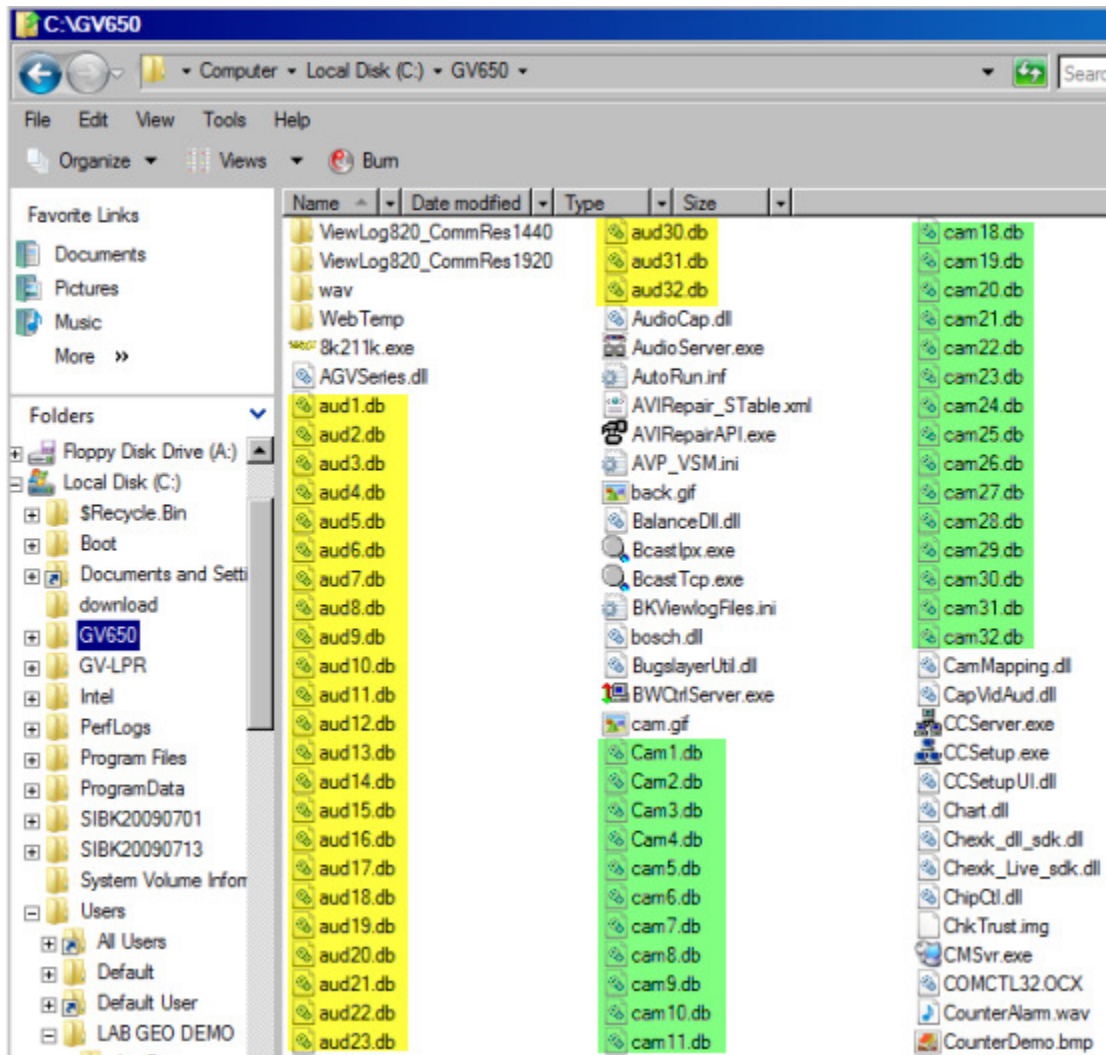
3. Now you need to open Windows Explore to find the GeoVision program folder. The location of the folder depends on where you loaded the program during the install. The sample below shows the location where we loaded the program on the sample machine. Start by right clicking on the **Start** button (blue arrow below) and then left click on Explore (red arrow).



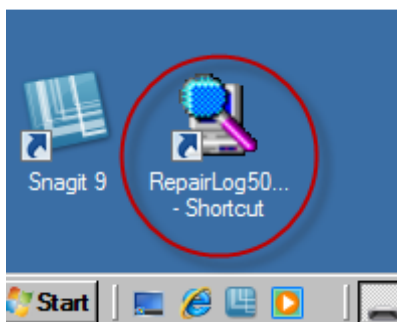
You will now see Windows Explore (shown below) which shows where all programs are stored on your PC. The red arrow below is showing the GeoVision folder that has all of the GeoVision program files.



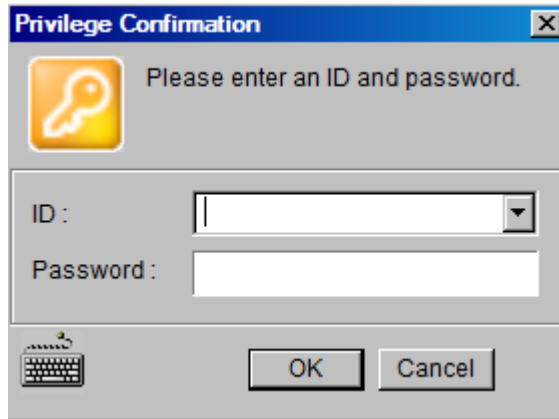
4. Now click once on the GV folder (in this case the GV650 folder) and it will display all of the GeoVision folder contents as seen below.
5. You will need to select all of the aud.db (highlighted in yellow) and all of the cam.db (highlighted in green) files and delete them. You can delete them by selecting them and then hitting the delete key on your keyboard . *In the sample below you see aud and cam files from 1-32 because this is a system that was configured for 32 cameras. Your system will only have aud and cam files going up to the number of cameras and audio devices that your system can support.*



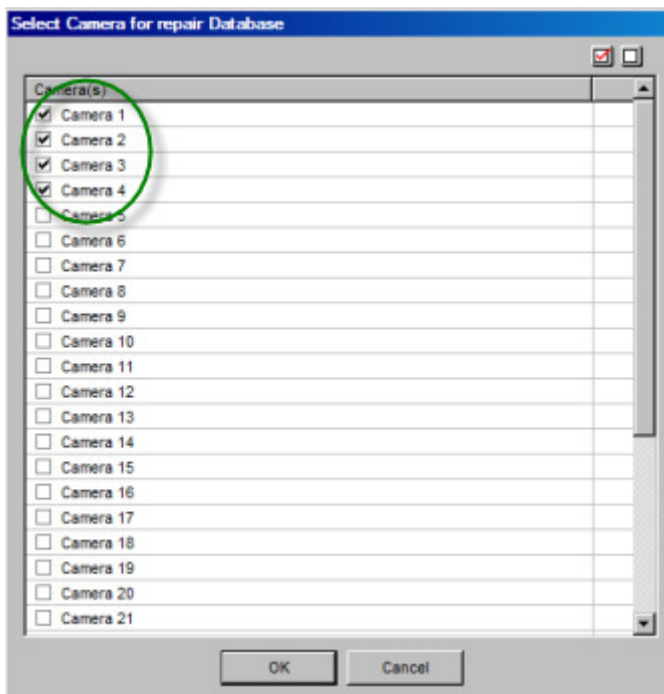
6. After deleting the *.db files you need to find the Database repair icon on your desktop as shown below (red circle). When you load the GeoVision system on your PC, the **Repair Log 500** file is loaded in the GeoVision program folder (above). EX: If you have a GV650 capture card, the folder will be called **GV650**. If you loaded the system yourself, you may not have created a desktop shortcut for the program, if so you will have to find the file in the GeoVision folder. It is a good idea to create a shortcut on your desktop. If we built your PC and loaded the GeoVision system you will already have the shortcut on your desktop and it is probably named **DB Repair**.



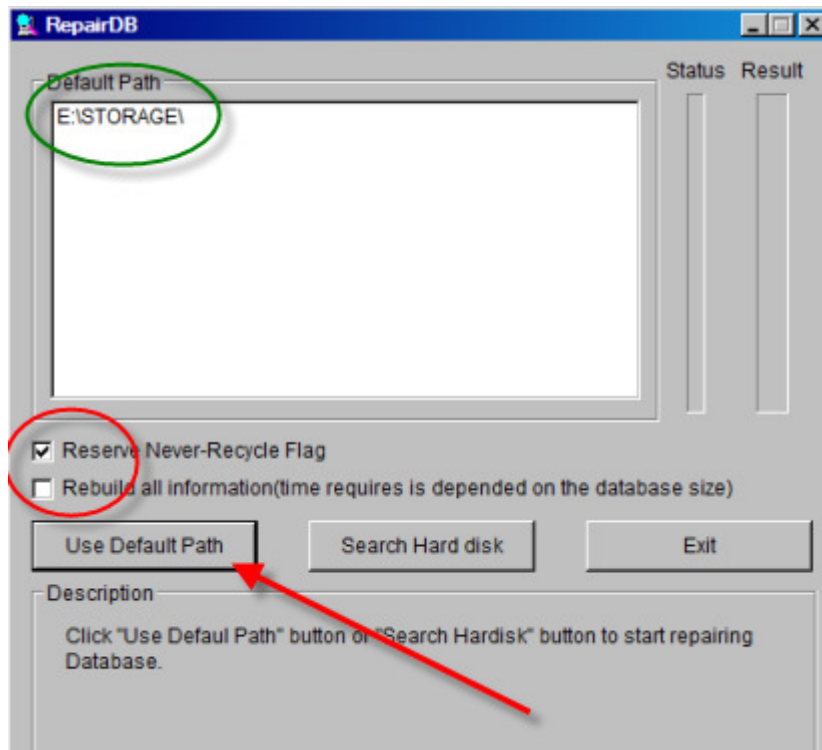
7. Once you have opened the DB repair you will see the following screen and you have to enter your ID/PW that you use as Administrator for the GeoVision program.



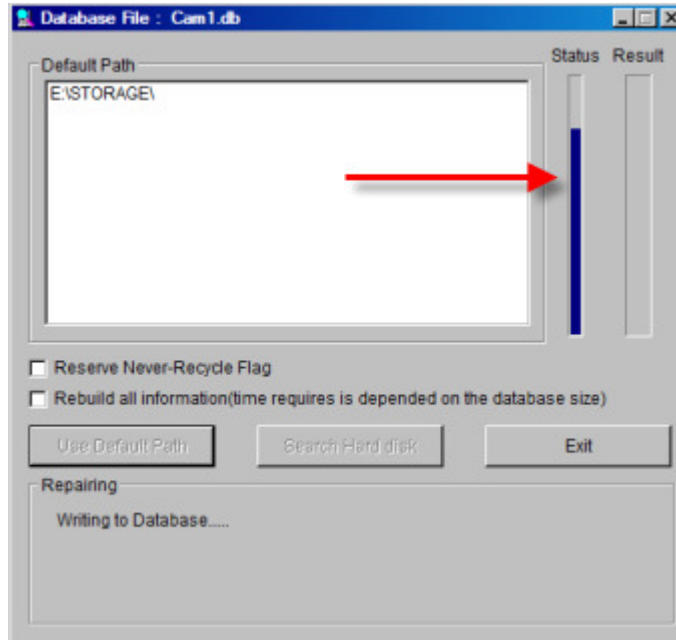
8. Once you have logged into the repair tool you will see the following screen. The sample below is showing cameras 1-4 as selected. If you have an 8 channel system but only have 6 cameras in use, then you would select cameras 1-6. If you have all 8 cameras in use then you would select 1-8.



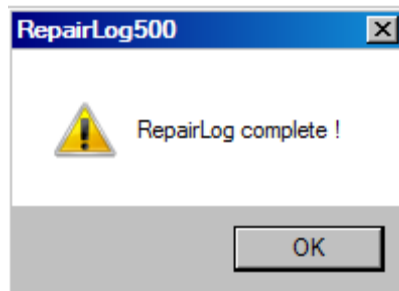
9. After you select the cameras you are working with, click on the OK button at the bottom of the screen and you will get the main setup screen shown below.



10. The screen above is where you setup the repair process. Check the **Default Path** (green circle above) and make sure this is where you store your video files. By default it should be showing the correct location, if it is not or if it does not have all of the locations listed, then use the Search Hard Disk button and navigate to all of the locations, selecting them as you find them. Once the location is correct, then take the check out of the **Reserve Never-Recycle Flag** check box (red circle above) and then click on the **Use Default Path** button.



11. When you click on the **Use Default Path** button the repair will start. You will see a status bar as shown above (red arrow).
 12. When it is complete, you will see the following popup window. This repair process usually takes 2-5 min to complete.



***Sometimes the DB repair will not resolve all of your issues, if that is the case, repeat the process except on step 10, check both of the boxes in the red circle, and then run the repair. This repair can take up to an hour or more to run.